



GAT MONTHLY MEMBERSHIP PROGRESS REPORT

Results as of: 10/31/2021

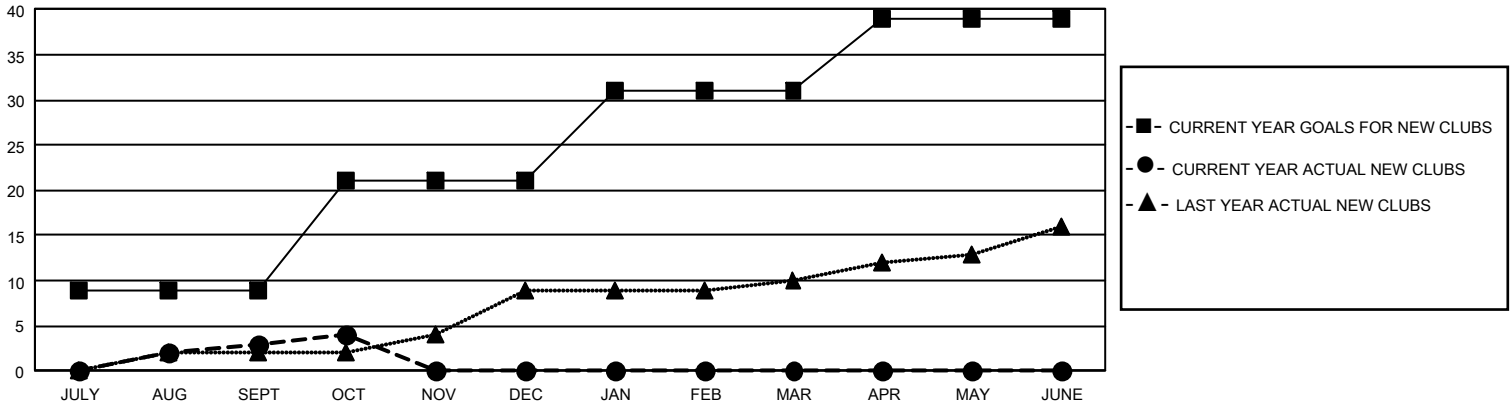
GMT Constitutional Area 1, Group M

REPORT DOES NOT INCLUDE CLUBS IN UNDISTRICTED AREAS.

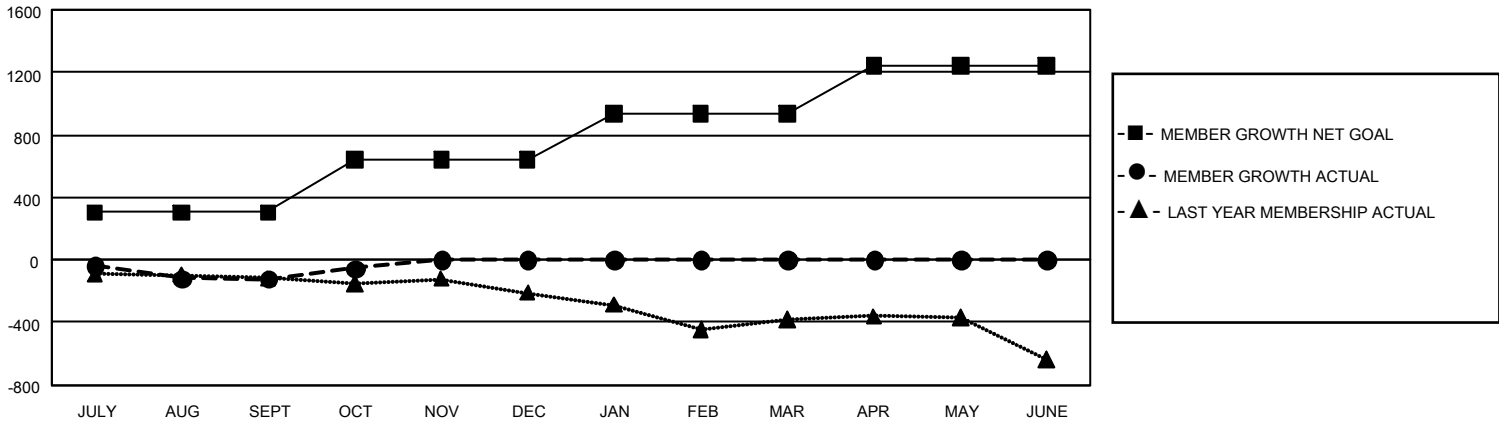
| Clubs | | | |
|-----------------------|---------------|-----------|---------------|
| RESULTS FOR 2021-2022 | | | |
| QUARTER | NEW CLUB GOAL | NEW CLUBS | DROPPED CLUBS |
| JULY/AUG/SEPT | 27 | 3 | 11 |
| OCT/NOV/DEC | 36 | 1 | 0 |
| JAN/FEB/MAR | 30 | 0 | 0 |
| APR/MAY/JUNE | 24 | 0 | 0 |

| Members | | | |
|-----------------------|------------------------|----------------------|--|
| RESULTS FOR 2021-2022 | | | |
| QUARTER | MEMBER GROWTH NET GOAL | MEMBER GROWTH ACTUAL | DROPPED MEMBERS ACTUAL (including transfers) |
| JULY/AUG/SEPT | 306 | 673 | 704 |
| OCT/NOV/DEC | 335 | 259 | 126 |
| JAN/FEB/MAR | 292 | 0 | 0 |
| APR/MAY/JUNE | 307 | 0 | 0 |

GOALS AND ACTUAL NEW CLUBS CUMULATIVE



GOALS AND ACTUAL MEMBERS CUMULATIVE



| | | | |
|------------------------|---|---------------------------------|-----------------|
| DROPPED CLUBS: 11 | 277 CLUBS OF 809 ADDED 1 OR MORE NEW MEMBERS | <u>GENDER DISTRIBUTION</u> | |
| <u>DROPPED MEMBERS</u> | | MALE | 10,832 (62.34%) |
| DECEASED | 115 | FEMALE | 6,542 (37.65%) |
| CLUB CANCELLED | 160 | NON BINARY | 0 (0.00%) |
| OTHER | 555 | PREFER NOT TO ANSWER | 1 (0.01%) |
| TOTAL | 830 | TOTAL FAMILY UNIT MEMBERS | 3,670 |
| | CLICK HERE FOR CUMULATIVE MEMBERSHIP DATA | FAMILY MEMBERS PAYING HALF DUES | 1,882 |